

PROJECT NAME:

TYPE:

NOTES:

LUX QUICK SHIP - 2-BAR SINGLE CHANNEL

HIGH-BAY LED LUMINAIRE. INTENDED FOR NATATORIUMS, MANUFACTURING AND INDUSTRIAL FACILITIES, WAREHOUSES, CONVENTION CENTERS AND OTHER HIGH-CEILING APPLICATIONS.

OPTICS:

- WIDE 120° BEAM ANGLE FOR MAXIMUM UNIFORMITY
- LENSING AVAILABLE IN CLEAR
- OPTIONAL ACRYLIC LENSES
- WRAP-AROUND LENS OFFERS UP TO 10% UPLIGHT
- LED BARS ARE ROTATABLE FOR CUSTOM LIGHT DISTRIBUTION
DIRECT: 0° NADIR
INDIRECT: 180° NADIR

MECHANICAL:

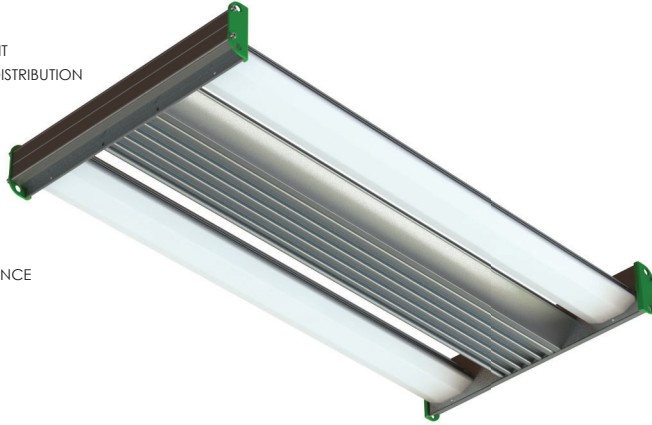
- EXTRUDED ALUMINUM CONSTRUCTION
- STAINLESS STEEL HARDWARE
- ISOLATED BOTTOM ACCESS DRIVER CHANNELS
- THERMALLY INDEPENDENT HEAT SINK LED BARS
- BRIGHT DIP ANODIZED FOR CORROSION RESISTANCE
- AMBIENT TEMPERATURE RATING:
-40°F TO 150°F, -40°C TO 65.5°C

COMPONENTS:

- HIGH-OUTPUT (HO3) SAMSUNG LED CHIPS
- HIGH-TEMP OSRAM DRIVERS

INSTALLATION:

- AIRCRAFT CABLE SUSPENSION
- SURFACE MOUNTING



PERFORMANCE:

- 17,750 LUMENS 4000K, NO LENS
- 123.6 WATTS
- 144 LUMENS PER WATT
- TM-21: L₇₀ >72,000 HOURS
- CALCULATED L₇₀ >147,000 HOURS
- SPACING CRITERION: @ 0 = 1.22 @ 90 = 1.26

ELECTRICAL:

- 120-277VAC
- 0-10V, 10% DIMMING DRIVERS STANDARD

WARRANTY:

- 10-YEAR WARRANTY ON FIXTURE BODY
- 5-YEAR WARRANTY ON ELECTRONICS
- FOR SPECIAL REQUESTS, CONTACT FACTORY

FIXTURE DIMENSIONS:

- 24" L x 12" W x 2.5" H
- 7 LBS

LISTINGS:

- ARRA COMPLIANT (MADE IN AMERICA)
- UL 1598 FOR DRY, DAMP, WET, AND CANOPY LOCATIONS

LUX Quick Ship
Ordering Code:


QS-18-840



QS 18 840

SERIES	OUTPUT	CRI CCT	LENS	CORD	CONTROLS	MOUNTING
QS QUICK SHIP	18 4000K, NO LENS: 17,750 LUMENS 4000K, CA LENS: 16,153 LUMENS	840	CA NL*	3/10 4/10 5/10	OCC OCCUPANCY SENSOR ON/OFF	CABLE: H10-18Y T SURFACE: SM

CABLE MOUNTS:



H10-18Y T (AC CABLE 2-POINT)
- "T" AT END OF PART NUMBER
DENOTES TOGGLE

SURFACE MOUNTS: NO ADDITIONAL HARDWARE PROVIDED.

OUTPUT

4000K NO LENS: 17,750 LUMENS
4000K CA LENS: 16,153 LUMENS

CRI PERFORMANCE DATA

80 CRI - STANDARD/NOMINAL
CCT PERFORMANCE DATA
4000K: STANDARD/NOMINAL

LENS PERFORMANCE DATA

NL (NO LENS) - NOMINAL, NO LIGHT LOSS
*REQUIRES REWORK FEE
CA (CLEAR ACRYLIC) - 9% LIGHT LOSS

CORD DATA:

3 WIRE - SINGLE LEG ON/OFF SWITCH 4
WIRE - DUAL LEG SWITCH, OR SINGLE
SWITCH WITH EMERGENCY BATTERY
5 WIRE - SINGLE LEG SWITCH WITH DIMMING

CHANNEL ACCESS

BOTTOM - FIXTURE CHANNEL
ACCESSIBLE FROM BELOW.

CHANNEL AND ASSEMBLY CONFIGURATION:

SA   12"W, 7LBS

OCCUPANCY SENSOR - ON/OFF	
CONTROL TYPE	PIR LINE VOLTAGE
AMBIENT TEMPERATURE	-10°C TO 60°C, LOW TEMP OPTION AVAILABLE
MOUNTING HEIGHT	15' TO 40'