

PROJECT NAME:

TYPE:

NOTES:

## LUX QUICK SHIP - 2-BAR SINGLE CHANNEL

HIGH-BAY LED LUMINAIRE. INTENDED FOR NATATORIUMS, MANUFACTURING AND INDUSTRIAL FACILITIES, WAREHOUSES, CONVENTION CENTERS AND OTHER HIGH-CEILING APPLICATIONS.

### OPTICS:

- WIDE 120° BEAM ANGLE FOR MAXIMUM UNIFORMITY
- LENSING AVAILABLE IN CLEAR
- OPTIONAL ACRYLIC LENSES
- WRAP-AROUND LENS OFFERS UP TO 10% UPLIGHT
- LED BARS ARE ROTATABLE FOR CUSTOM LIGHT DISTRIBUTION  
DIRECT: 0° NADIR  
INDIRECT: 180° NADIR

### MECHANICAL:

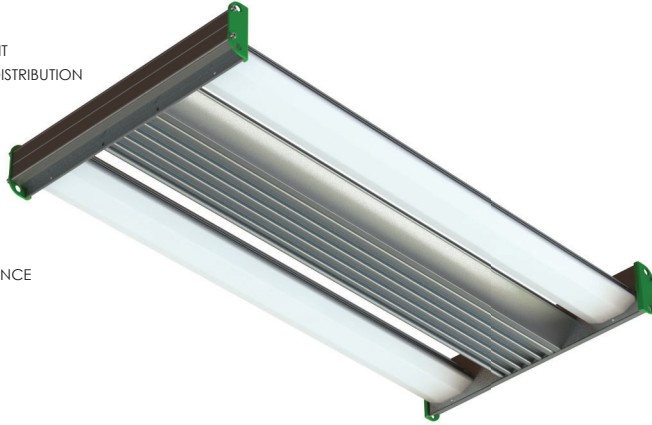
- EXTRUDED ALUMINUM CONSTRUCTION
- STAINLESS STEEL HARDWARE
- ISOLATED BOTTOM ACCESS DRIVER CHANNELS
- THERMALLY INDEPENDENT HEAT SINK LED BARS
- BRIGHT DIP ANODIZED FOR CORROSION RESISTANCE
- AMBIENT TEMPERATURE RATING:  
-40°F TO 150°F, -40°C TO 65.5°C

### COMPONENTS:

- HIGH-OUTPUT (HO3) SAMSUNG LED CHIPS
- HIGH-TEMP OSRAM DRIVERS

### INSTALLATION:

- AIRCRAFT CABLE SUSPENSION
- SURFACE MOUNTING



### PERFORMANCE:

- 23,635 LUMENS 4000K, NO LENS
- 163 WATTS
- 145 LUMENS PER WATT
- TM-21: L<sub>70</sub> >72,000 HOURS
- CALCULATED L<sub>70</sub> >147,000 HOURS
- SPACING CRITERION: @ 0 = 1.22 @ 90 = 1.26

### ELECTRICAL:

- 120-277VAC
- 0-10V, 10% DIMMING DRIVERS STANDARD

### WARRANTY:

- 10-YEAR WARRANTY ON FIXTURE BODY
- 5-YEAR WARRANTY ON ELECTRONICS
- FOR SPECIAL REQUESTS, CONTACT FACTORY

### FIXTURE DIMENSIONS:

- 24" L x 12" W x 2.5" H
- 7 LBS

### LISTINGS:

- ARRA COMPLIANT (MADE IN AMERICA)
- UL 1598 FOR DRY, DAMP, WET, AND CANOPY LOCATIONS

LUX Quick Ship  
Ordering Code:


**QS-24-840**



QS 24 840

SERIES	OUTPUT	CRI CCT	LENS	CORD	CONTROLS	MOUNTING
QS QUICK SHIP	24 4000K, NO LENS: 23,635 LUMENS 4000K, CA LENS: 22,690 LUMENS	840	CA NL*	3/10 4/10 5/10	OCC OCCUPANCY SENSOR ON/OFF	CABLE: H10-18Y T SURFACE: SM

### CABLE MOUNTS:



**H10-18Y T (AC CABLE 2-POINT)**  
- "T" AT END OF PART NUMBER  
DENOTES TOGGLE

**SURFACE MOUNTS: NO ADDITIONAL HARDWARE PROVIDED.**

### OUTPUT

4000K NO LENS: 23,635 LUMENS  
4000K CA LENS: 21,507 LUMENS

### CRI PERFORMANCE DATA

80 CRI - STANDARD/NOMINAL  
**CCT PERFORMANCE DATA**  
4000K: STANDARD/NOMINAL

### LENS PERFORMANCE DATA

NL (NO LENS) - NOMINAL, NO LIGHT LOSS  
\*REQUIRES REWORK FEE  
CA (CLEAR ACRYLIC) - 9% LIGHT LOSS

### CORD DATA:

- 3 WIRE - SINGLE LEG ON/OFF SWITCH
- 4 WIRE - DUAL LEG SWITCH, OR SINGLE SWITCH WITH EMERGENCY BATTERY
- 5 WIRE - SINGLE LEG SWITCH WITH DIMMING

### CHANNEL ACCESS

BOTTOM - FIXTURE CHANNEL  
ACCESSIBLE FROM BELOW.

### CHANNEL AND ASSEMBLY CONFIGURATION:

SA  12"W, 7LBS

OCCUPANCY SENSOR - ON/OFF	
CONTROL TYPE	PIR LINE VOLTAGE
AMBIENT TEMPERATURE	-10°C TO 60°C, LOW TEMP OPTION AVAILABLE
MOUNTING HEIGHT	15' TO 40'