



UL LLC
1075 W Lambert Rd Suite B
Brea, CA 92821

Indoor Distribution Test Report

Relevant Standards
IES LM-79-2008, ANSI C82.77-10-2014

Prepared For
Lux Dynamics

Andy Munter
1350 Capital Blvd
Reno, NV 89502

Catalog Number
360P-2-DR-835-xxx-xx-WA

Order Number
13551818
Test Number
13551818.04

Test Date

2020-10-30

Prepared By

William Escobar, Technician

Approved By

Eric Gaudreau, Engineering Leader

The results contained in this report pertain only to the tested sample.
This report shall not be reproduced, except in full, without written approval of Underwriters Laboratories.
This report must not be used by the client to claim product certification, approval, or endorsement by
NVLAP, NIST, or any agency of the Federal Government.



Luminaire Description: Gray cylindrical metal housing with diffuse plastic lens
Lamp: White 612 LEDs
Mounting: Pendant
Ballast/Driver: One (1) OSRAM OPTOTRONIC OTi 85/120-277/2A3 DIM L HB

Luminaire



Luminaire Characteristics

Luminous Length: 23.00 in.
Luminous Width: 4.500 in.
Luminous Height: 3.00 in.

Summary of Results

Total Luminaire Output: 7037 Lumens
Luminaire Efficacy: 137.9 lm/w
Maximum Candela: 1519 Candela

Test Conditions

Test Temperature: 25.7 °C
Voltage: 277.0 VAC
Current: 0.1942 A
Power: 51.02 W
Power Factor: 0.949
Frequency: 60 Hz
Current THD: 13.0 %

Laboratory results may not be representative of field performance
Ballast factors have not been applied



Distribution - Goniophotometer

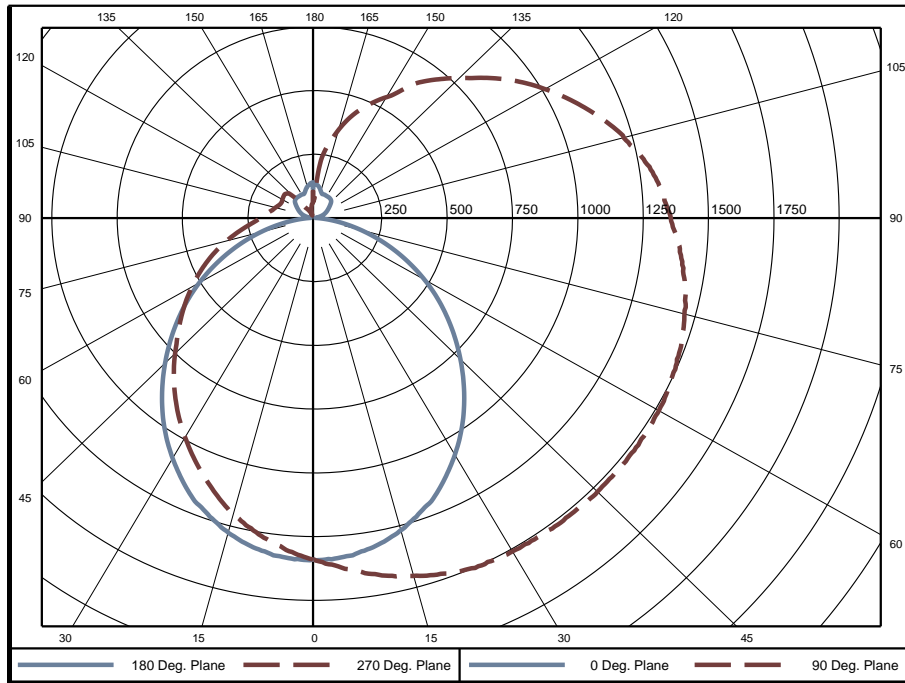
Distribution Test Conditions

Temperature	Voltage	Current	Power	Power Factor	Frequency	Current THD
25.7 °C	277.0 VAC	0.1942 A	51.02 W	0.949	60 Hz	13.0 %

Summary of Results

Spacing Criteria	Total Lumen Output:	7037 Lumens
0-180: 1.20	Luminaire Efficacy:	137.9 lm/w
90-270: 1.70	Maximum Candela:	1519 Candela
Corrected UGR (Room Dimension: X=4H, Y=8H, Reflectances: 70/50/20%, S/H: 1)	Endwise:	23.6
Crosswise: 22.3		

Polar Plot



Zonal Lumen Summary

Zone	Lumens	% of Luminaire	Zone	Lumens	% of Luminaire	Zone	Lumens	% of Luminaire
0-5	32.0	0.5%	60-65	354.0	5.0%	120-125	151.6	2.2%
5-10	95.1	1.4%	65-70	335.4	4.8%	125-130	135.7	1.9%
10-15	155.5	2.2%	70-75	313.8	4.5%	130-135	117.7	1.7%
15-20	211.1	3.0%	75-80	290.2	4.1%	135-140	98.7	1.4%
20-25	260.2	3.7%	80-85	266.4	3.8%	140-145	80.6	1.1%
25-30	301.1	4.3%	85-90	245.7	3.5%	145-150	64.7	0.9%
30-35	333.4	4.7%	90-95	232.7	3.3%	150-155	50.2	0.7%
35-40	356.4	5.1%	95-100	221.4	3.1%	155-160	36.8	0.5%
40-45	370.5	5.3%	100-105	208.9	3.0%	160-165	25.7	0.4%
45-50	376.3	5.3%	105-110	195.9	2.8%	165-170	16.6	0.2%
50-55	375.0	5.3%	110-115	181.6	2.6%	170-175	9.0	0.1%
55-60	367.5	5.2%	115-120	166.6	2.4%	175-180	2.7	0.0%

Zone	Lumens	% of Luminaire
0-40	1745	24.8%
0-60	3234	46.0%
0-90	5040	71.6%
90-180	1997	28.4%



Candela Tabulation

Horizontal Angle (Degrees)

	0	22.5	45	67.5	90	112.5	135	157.5	180	202.5	225	247.5	270	292.5	315	337.5
0	1339	1339	1339	1339	1339	1339	1339	1339	1339	1339	1339	1339	1339	1339	1339	1339
5	1334	1347	1363	1375	1382	1375	1363	1347	1334	1313	1303	1301	1300	1301	1303	1313
10	1312	1347	1382	1411	1421	1411	1382	1347	1312	1277	1259	1253	1251	1253	1259	1277
15	1271	1331	1390	1436	1454	1436	1390	1331	1271	1228	1208	1201	1199	1201	1208	1228
20	1218	1300	1385	1457	1485	1457	1385	1300	1218	1167	1141	1131	1128	1131	1141	1167
25	1155	1254	1372	1467	1504	1467	1372	1254	1155	1090	1063	1057	1057	1057	1063	1090
30	1076	1202	1351	1463	1508	1463	1351	1202	1076	1005	979	980	983	980	979	1005
35	988	1138	1312	1455	1514	1455	1312	1138	988	913	892	903	907	903	892	913
40	893	1066	1268	1445	1515	1445	1268	1066	893	815	806	820	826	820	806	815
45	793	988	1221	1433	1517	1433	1221	988	793	717	717	736	744	736	717	717
50	693	902	1173	1416	1517	1416	1173	902	693	619	627	653	669	653	627	619
55	594	814	1123	1400	1511	1400	1123	814	594	523	538	581	600	581	538	523
60	492	726	1074	1381	1506	1381	1074	726	492	432	459	511	531	511	459	432
65	389	639	1024	1357	1491	1357	1024	639	389	341	387	444	466	444	387	341
70	289	559	974	1331	1476	1331	974	559	289	255	320	380	402	380	320	255
75	195	489	928	1301	1449	1301	928	489	195	184	258	318	340	318	258	184
80	110	426	880	1267	1423	1267	880	426	110	125	202	261	282	261	202	125
85	42	375	836	1229	1388	1229	836	375	42	78	154	213	234	213	154	78
90	9	339	797	1194	1349	1194	797	339	9	53	126	182	202	182	126	53
95	13	319	771	1164	1317	1164	771	319	13	44	109	162	181	162	109	44
100	23	302	737	1122	1271	1122	737	302	23	44	98	145	163	145	98	44
105	35	291	703	1071	1213	1071	703	291	35	49	93	135	151	135	93	49
110	46	284	667	1013	1152	1013	667	284	46	54	93	128	141	128	93	54
115	56	285	635	954	1083	954	635	285	56	42	98	125	136	125	98	42
120	65	288	602	894	1011	894	602	288	65	27	104	128	136	128	104	27
125	76	291	569	830	937	830	569	291	76	24	104	132	140	132	104	24
130	88	294	540	761	856	761	540	294	88	21	79	133	143	133	79	21
135	97	296	506	697	777	697	506	296	97	18	45	120	137	120	45	18
140	100	294	476	632	708	632	476	294	100	14	37	74	97	74	37	14
145	100	280	452	576	631	576	452	280	100	18	30	45	50	45	30	18
150	100	254	417	517	546	517	417	254	100	36	23	34	38	34	23	36
155	101	223	362	457	488	457	362	223	101	51	15	24	27	24	15	51
160	100	188	304	398	426	398	304	188	100	67	24	15	17	15	24	67
165	111	164	240	312	350	312	240	164	111	86	50	28	15	28	50	86
170	125	148	181	219	274	219	181	148	125	107	78	50	33	50	78	107
175	134	137	142	141	119	141	142	137	134	123	100	62	53	62	100	123
180	111	111	111	111	111	111	111	111	111	111	111	111	111	111	111	111

Average Luminance (cd/m²)

Horizontal Angle (Degrees)

	0	45	90
0	20050	20050	20050
45	14860	16540	19280
55	13070	16240	20210
65	10780	16430	21740
75	7581	17290	24040
85	2871	19300	27670

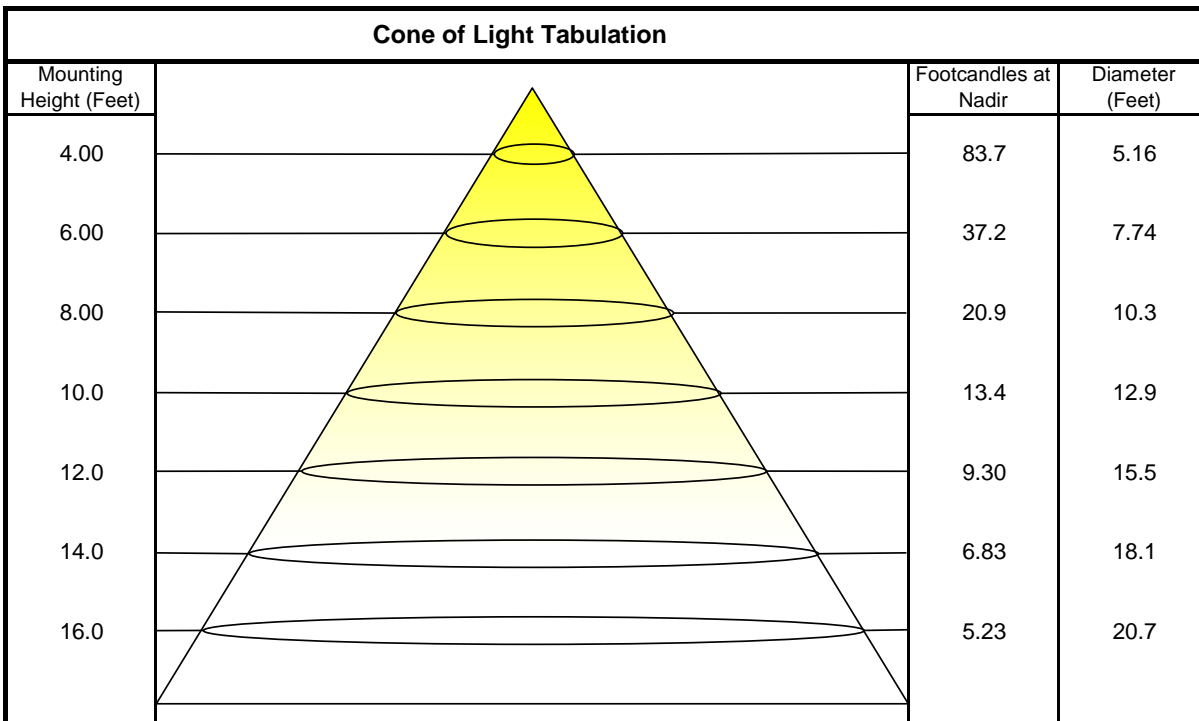


Coefficients of Utilization - Zonal Cavity Method

Effective Floor Cavity Reflectance 20%

Ceiling Cavity Reflectance	80				70				50			30			10			0
Wall Reflectance	70	50	30	10	70	50	30	10	50	30	10	50	30	10	50	30	10	0
Room Cavity Ratio (RCR)	** Values are expressed as percent of total lumen output delivered to the task surface **																	
0	112	112	112	112	106	106	106	106	95	95	95	85	85	85	76	76	76	72
1	99	94	88	84	94	88	84	80	79	75	72	70	67	65	62	60	58	54
2	89	80	72	66	84	76	69	63	68	62	57	60	56	52	53	50	46	43
3	81	70	61	54	76	66	58	51	59	52	47	52	47	43	46	42	38	35
4	74	61	52	45	69	58	49	43	52	45	39	46	40	36	41	36	32	29
5	67	54	45	38	63	51	43	37	46	39	34	41	35	31	36	32	28	25
6	62	48	39	33	58	46	38	32	41	34	29	37	31	27	33	28	24	21
7	57	44	35	29	54	42	33	28	37	31	25	34	28	23	30	25	21	19
8	53	40	31	25	50	38	30	24	34	27	23	31	25	21	27	23	19	17
9	50	36	28	23	47	35	27	22	31	25	20	28	23	19	25	21	17	15
10	46	33	25	20	44	32	24	19	29	23	18	26	21	17	24	19	15	13

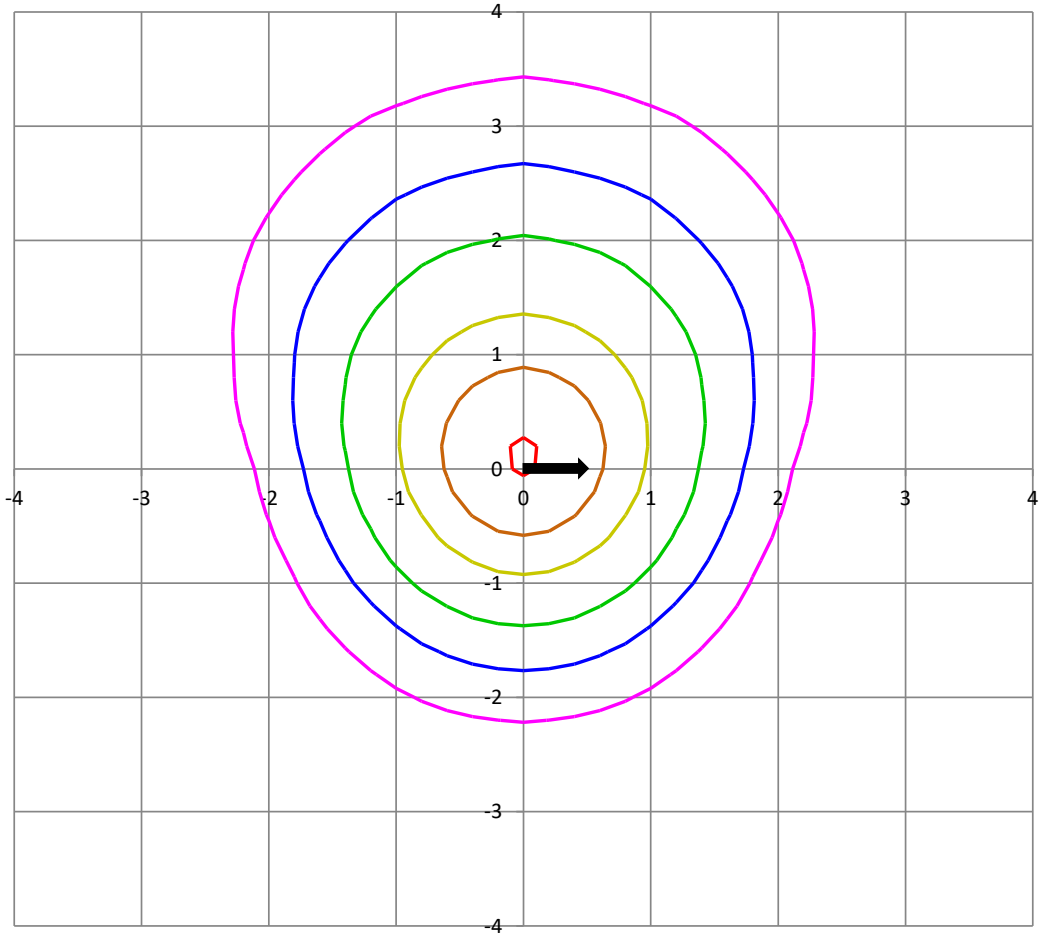
Beam and Field Information	
CIE Type:	Semi-Direct
Center Beam Intensity:	1339 Candela
Central Cone Intensity:	1337 Candela
Beam Flux:	5190.8 Lumens
Beam Angle (0-180):	102.4 Degrees
Beam Angle (90-270):	192.7 Degrees
Field Angle (0-180):	157.0 Degrees
Field Angle (90-270):	311.0 Degrees





ISOFootcandle Plot

Mounting Height - 8 Feet



Grid Lines in Units of Mounting Height

