



UL LLC  
1075 W Lambert Rd Suite B  
Brea, CA 92821

## Indoor Distribution Test Report

Relevant Standards  
IES LM-79-2008, ANSI C82.77-10-2014

Prepared For  
**Lux Dynamics**

Andy Munter  
1350 Capital Blvd  
Reno, NV 89502

Catalog Number  
**360P-2-URD-835-xxx-xx-CA**

Order Number  
13551818  
Test Number  
13551818.07

Test Date

2020-10-30

Prepared By

William Escobar, Technician

Approved By

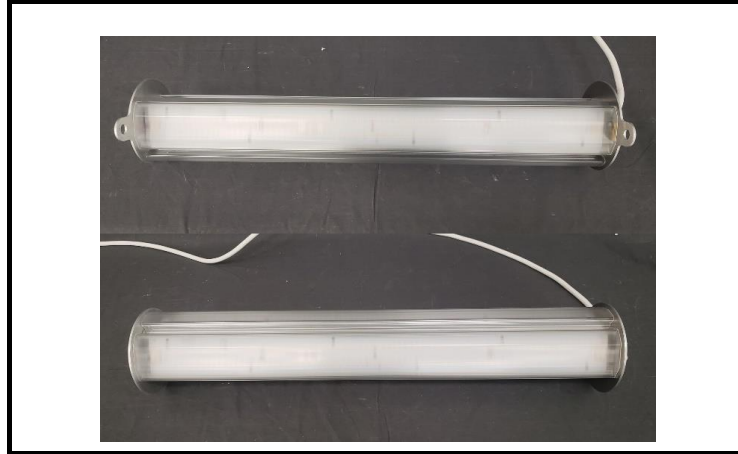
Eric Gaudreau, Engineering Leader

The results contained in this report pertain only to the tested sample.  
This report shall not be reproduced, except in full, without written approval of Underwriters Laboratories.  
This report must not be used by the client to claim product certification, approval, or endorsement by  
NVLAP, NIST, or any agency of the Federal Government.



**Luminaire Description:** Gray cylindrical metal housing with diffuse plastic lens  
**Lamp:** White 918 LEDs  
**Mounting:** Pendant  
**Ballast/Driver:** One (1) OSRAM OPTOTRONIC OTi 85/120-277/2A3 DIM L HB

### Luminaire



### Luminaire Characteristics

Luminous Length: 23.00 in.  
Luminous Width: 4.500 in.  
Luminous Height: 4.50 in.

### Summary of Results

Total Luminaire Output: 8129 Lumens  
Luminaire Efficacy: 162 lm/w  
Maximum Candela: 1350 Candela

### Test Conditions

Test Temperature: 25.6 °C  
Voltage: 277.0 VAC  
Current: 0.1914 A  
Power: 50.17 W  
Power Factor: 0.946  
Frequency: 60 Hz  
Current THD: 13.2 %

Laboratory results may not be representative of field performance  
Ballast factors have not been applied



## Distribution - Goniophotometer

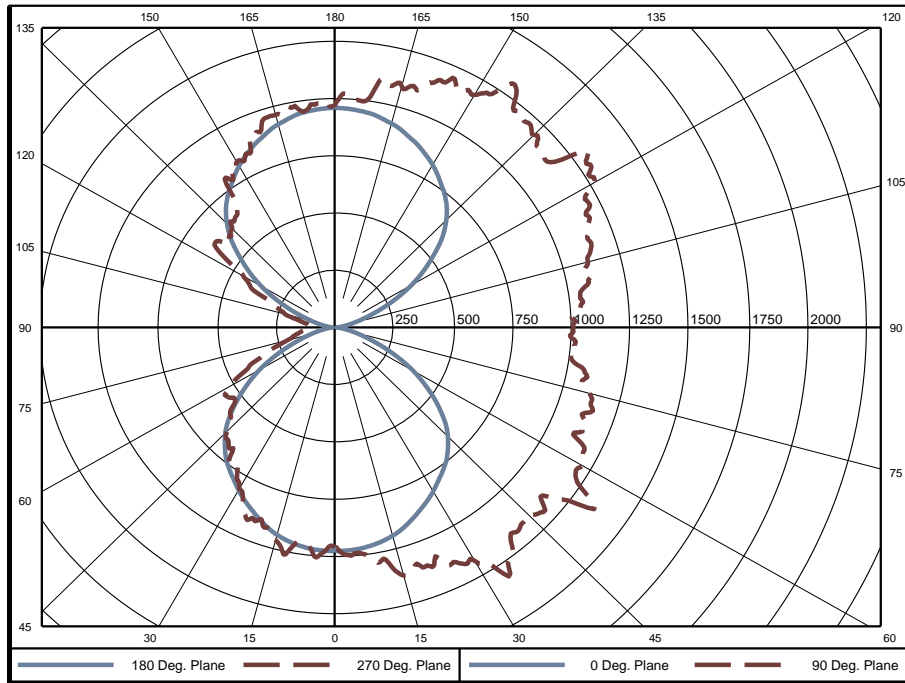
### Distribution Test Conditions

Temperature	Voltage	Current	Power	Power Factor	Frequency	Current THD
25.6 °C	277.0 VAC	0.1914 A	50.17 W	0.946	60 Hz	13.2 %

### Summary of Results

<b>Spacing Criteria</b>	<b>Total Lumen Output:</b>	8129 Lumens
0-180: 1.28	<b>Luminaire Efficacy:</b>	162.0 lm/w
90-270: 1.80	<b>Maximum Candela:</b>	1350 Candela
<b>Corrected UGR (Room Dimension: X=4H, Y=8H, Reflectances: 70/50/20%, S/H: 1)</b>	<b>Endwise:</b>	19.7
<b>Crosswise:</b> 18.5		

### Polar Plot



### Zonal Lumen Summary

Zone	Lumens	% of Luminaire	Zone	Lumens	% of Luminaire	Zone	Lumens	% of Luminaire
0-5	23.4	0.3%	60-65	297.5	3.7%	120-125	312.4	3.8%
5-10	70.0	0.9%	65-70	272.5	3.4%	125-130	309.5	3.8%
10-15	117.4	1.4%	70-75	248.2	3.1%	130-135	311.1	3.8%
15-20	162.8	2.0%	75-80	224.5	2.8%	135-140	305.6	3.8%
20-25	202.7	2.5%	80-85	205.4	2.5%	140-145	297.0	3.7%
25-30	239.0	2.9%	85-90	193.1	2.4%	145-150	271.3	3.3%
30-35	270.5	3.3%	90-95	193.1	2.4%	150-155	240.8	3.0%
35-40	295.8	3.6%	95-100	205.7	2.5%	155-160	203.6	2.5%
40-45	307.1	3.8%	100-105	225.1	2.8%	160-165	162.0	2.0%
45-50	312.9	3.8%	105-110	248.4	3.1%	165-170	117.7	1.4%
50-55	309.5	3.8%	110-115	273.7	3.4%	170-175	70.1	0.9%
55-60	308.4	3.8%	115-120	297.7	3.7%	175-180	23.5	0.3%

Zone	Lumens	% of Luminaire
0-40	1382	17.0%
0-60	2620	32.2%
0-90	4061	50.0%
90-180	4068	50.0%



**Candela Tabulation**

Horizontal Angle (Degrees)

	0	22.5	45	67.5	90	112.5	135	157.5	180	202.5	225	247.5	270	292.5	315	337.5
0	958	958	958	958	958	958	958	958	958	958	958	958	958	958	958	958
5	974	985	995	991	990	991	995	985	974	950	986	1005	1003	1005	986	950
10	962	981	997	1023	1043	1023	997	981	962	971	951	947	956	947	951	971
15	941	973	1030	1094	1122	1094	1030	973	941	955	948	974	964	974	948	955
20	907	987	1074	1081	1113	1081	1074	987	907	894	941	914	906	914	941	894
25	866	986	1051	1082	1147	1082	1051	986	866	858	870	899	905	899	870	858
30	824	927	1041	1156	1176	1156	1041	927	824	830	849	821	816	821	849	830
35	778	882	1064	1235	1278	1235	1064	882	778	784	781	747	725	747	781	784
40	730	835	1067	1186	1170	1186	1067	835	730	726	696	715	690	715	696	726
45	667	798	1061	1103	1156	1103	1061	798	667	638	632	633	656	633	632	638
50	581	780	915	1104	1142	1104	915	780	581	547	544	573	585	573	544	547
55	481	675	831	1199	1323	1199	831	675	481	471	452	506	534	506	452	471
60	377	598	887	1119	1207	1119	887	598	377	374	393	498	518	498	393	374
65	266	502	868	1121	1108	1121	868	502	266	287	386	417	405	417	386	287
70	165	408	863	1040	1108	1040	863	408	165	222	324	310	298	310	324	222
75	95	360	776	1016	1112	1016	776	360	95	170	251	228	203	228	251	170
80	49	301	742	1037	1067	1037	742	301	49	121	190	157	163	157	190	121
85	23	256	725	949	1013	949	725	256	23	81	154	130	129	130	154	81
90	11	242	728	932	1006	932	728	242	11	68	138	116	109	116	138	68
95	19	253	737	962	1040	962	737	253	19	88	148	125	106	125	148	88
100	44	293	760	1027	1082	1027	760	293	44	131	181	166	142	166	181	131
105	89	352	786	1020	1105	1020	786	352	89	185	251	214	217	214	251	185
110	160	405	856	1075	1133	1075	856	405	160	225	345	281	278	281	345	225
115	260	483	881	1130	1167	1130	881	483	260	292	412	397	382	397	412	292
120	368	585	856	1186	1260	1186	856	585	368	371	415	509	453	509	415	371
125	471	668	834	1183	1298	1183	834	668	471	466	448	587	628	587	448	466
130	572	772	906	1090	1152	1090	906	772	572	544	531	563	611	563	531	544
135	657	803	1052	1125	1190	1125	1052	803	657	619	629	600	622	600	629	619
140	721	855	1049	1192	1231	1192	1049	855	721	695	722	666	648	666	722	695
145	770	910	1072	1202	1303	1202	1072	910	770	757	766	781	794	781	766	757
150	819	938	1063	1158	1174	1158	1063	938	819	855	824	806	836	806	824	855
155	858	971	1058	1149	1198	1149	1058	971	858	910	891	879	847	879	891	910
160	892	955	1063	1092	1136	1092	1063	955	892	899	924	949	918	949	924	899
165	922	965	1080	1097	1092	1097	1080	965	922	938	964	953	964	953	964	938
170	945	995	991	1055	1098	1055	991	995	945	963	948	964	983	964	948	963
175	955	1009	1008	997	996	997	1008	1009	955	950	976	979	976	979	976	950
180	971	971	971	971	971	971	971	971	971	971	971	971	971	971	971	971

**Average Luminance (cd/m<sup>2</sup>)**

Horizontal Angle (Degrees)

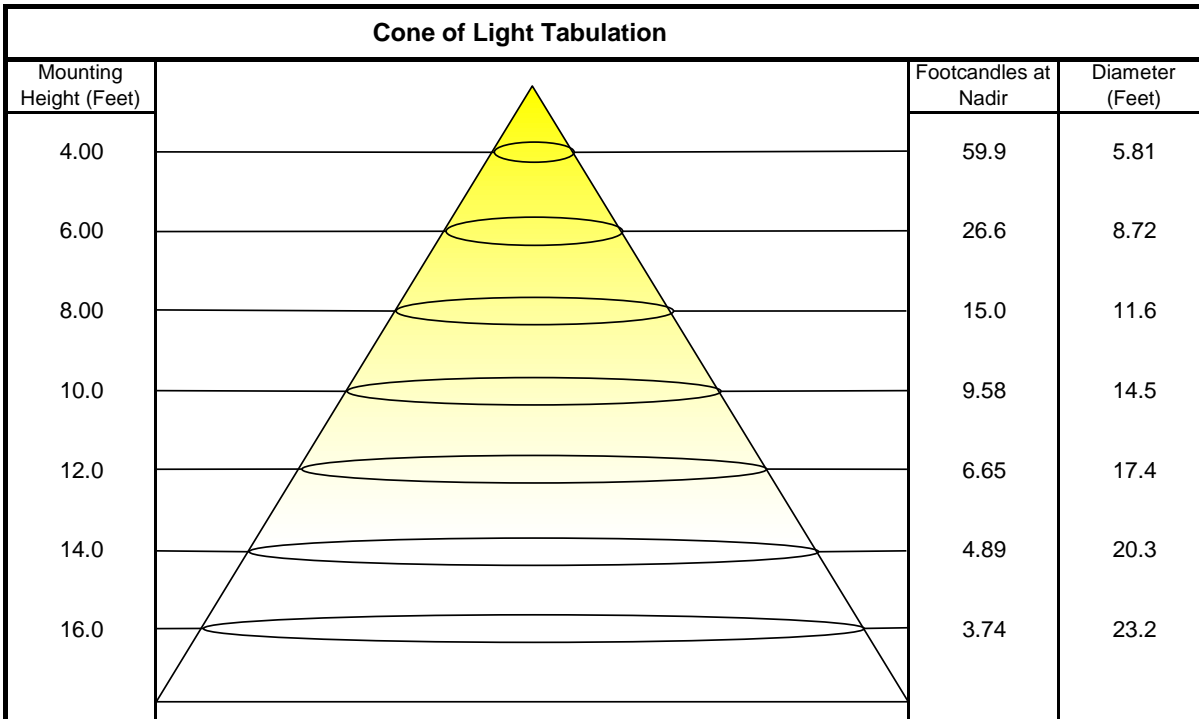
	0	45	90
0	14350	14350	14350
45	11810	12180	12240
55	9819	9828	14230
65	6643	10940	12490
75	3177	10810	13600
85	1195	11680	14010



### Coefficients of Utilization - Zonal Cavity Method

Effective Floor Cavity Reflectance 20%																		
Ceiling Cavity Reflectance	80				70				50			30			10			0
Wall Reflectance	70	50	30	10	70	50	30	10	50	30	10	50	30	10	50	30	10	0
Room Cavity Ratio (RCR)	** Values are expressed as percent of total lumen output delivered to the task surface **																	
0	107	107	107	107	99	99	99	99	83	83	83	69	69	69	56	56	56	50
1	96	90	86	81	88	83	79	75	70	67	64	57	55	53	46	44	43	38
2	86	78	71	65	79	72	65	60	60	55	51	49	46	43	39	37	35	30
3	78	68	59	53	71	62	55	49	52	47	42	43	39	35	34	31	29	24
4	71	59	51	44	65	55	47	41	46	40	35	38	33	30	30	27	24	20
5	65	53	44	37	59	49	41	35	41	35	30	34	29	25	27	23	21	17
6	60	47	38	32	55	43	36	30	37	30	26	30	25	22	24	21	18	15
7	55	42	34	28	50	39	31	26	33	27	23	27	23	19	22	18	16	13
8	51	38	30	24	47	35	28	23	30	24	20	25	20	17	20	17	14	11
9	48	35	27	22	44	32	25	20	27	22	18	23	18	15	19	15	12	10
10	44	32	24	19	41	30	23	18	25	20	16	21	17	13	17	14	11	9

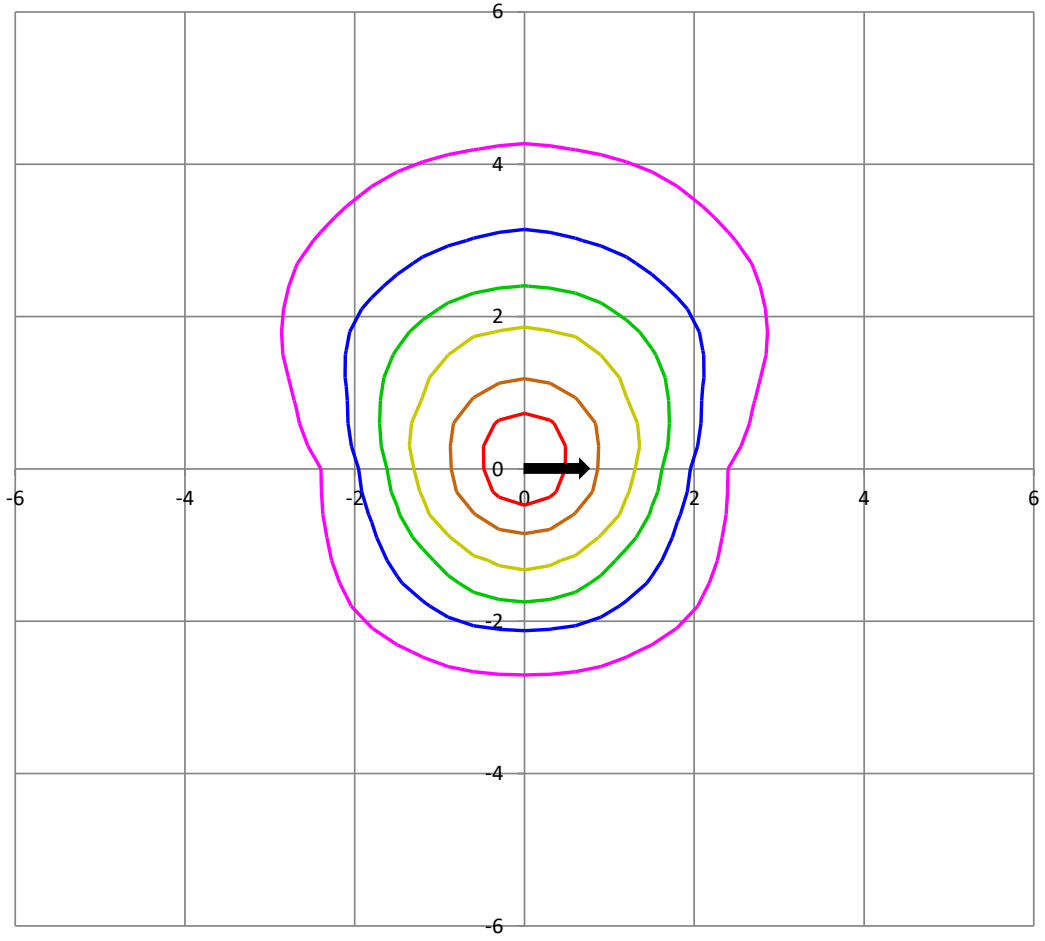
Beam and Field Information	
CIE Type:	Direct/Indirect
Center Beam Intensity:	958 Candela
Central Cone Intensity:	#REF! Candela
Beam Flux:	7032.3 Lumens
Beam Angle (0-180):	110.2 Degrees
Beam Angle (90-270):	#REF! Degrees
Field Angle (0-180):	149.9 Degrees
Field Angle (90-270):	#REF! Degrees





### ISOFootcandle Plot

Mounting Height - 8 Feet



Grid Lines in Units of Mounting Height

